



RECP #: 752708

RECORDED 5/8/2019 AT 1:13 PM BK# 2620 PG# 1750
Debra K. Lee, CLERK OF LARAMIE COUNTY, WY PAGE 1 OF 1

STATE OF WYOMING CORNER RECORD

(In compliance with the CORNER PERPETUATION AND FILING ACT, Wyoming Statutes, 1997 Section 33-29-140, et. seq., and the Rules and Regulations of the Board of Registrations for Professional Engineers and Professional Land Surveyors)

NORTHEAST CORNER SECTION 17, T. 18 N., R. 61 W., 6TH P.M., LARAMIE COUNTY, WYOMING

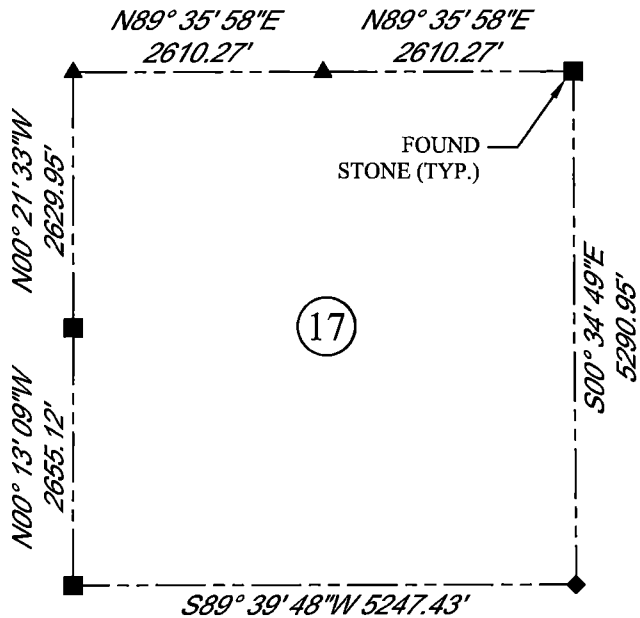
GLO: A SANDSTONE 16X8X5 SET 12 IN DEEP MARKED WITH 4 NOTCHES ON SOUTH EDGE AND 4 NOTCHES ON EAST SIDE FOR CORNER OF SECTIONS 8,9,16,17.

FOUND: FIRM SET SANDSTONE APPROX. 17X14X4 WITH EVIDENCE OF NOTCHES ON SOUTH EDGE. STONE IS SET ON NW SIDE OF N,S,W, FENCE CORNER.

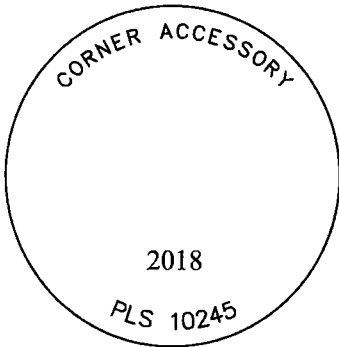
SET: SET ACCESSORY AS SHOWN ON NORTH SIDE OF STONE. CAP IS APPROXIMATELY 2 INCHES ABOVE GROUND.



SCALE: NONE
NORTH DETERMINED BY
G.P.S OBSERVATIONS



SET 3.25" ALUMINUM CAP, STAMPED AS SHOWN



DATE OF FIELD WORK: 09/11/2018 OFFICE REFERENCE: ???

LEGEND:

- FOUND BLM CAP
- ⊙ FOUND USFS CAP
- FOUND STONE
- FOUND PRIVATE MONUMENT
- ◆ CALCULATED POSITION
- ▲ SET MONUMENT (LS10245)
- SECTION LINE

CROSS INDEX DIAGRAM

	1	2	3	4	5	6	7	8	9	10	11	12	13	14	15	16	17	18	19	20	21	22	23	24	25
A																									
B																									
C		6																							
D				5																					
E					4																				
F						3																			
G							2																		
H								1																	
I																									
J																									
K																									
L																									
M																									
N																									
O																									
P																									
Q																									
R																									
S																									
T																									
U																									
V																									
W																									
X																									
Y																									
Z																									
	1	2	3	4	5	6	7	8	9	10	11	12	13	14	15	16	17	18	19	20	21	22	23	24	25

WOOD
2615 AVIATION DRIVE
SHERIDAN, WY 82801
PH: 307-675-6400



THIS CORNER RECORD WAS
PREPARED BY ME OR UNDER
MY DIRECTION AND
SUPERVISION,
SEAL AND SIGNATURE

